

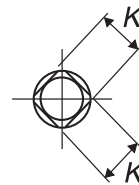
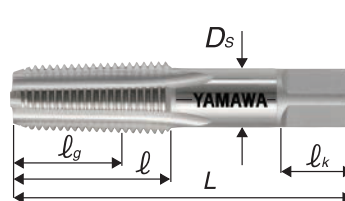
# PT

## 관용 테이퍼 나사 ( 긴 나사형 )

HSS



품구: 1G



규격	재고	상품코드	식부 Chamfer	등급	외경의 기준치수 (mm)	L (mm)	l (mm)	l <sub>g</sub> (mm)	D <sub>s</sub> (mm)	K (mm)	l <sub>k</sub> (mm)	흡수	형상
<b>관용</b>													
1/16-28	◎	TH2T01K-8	2.5P	II	7.723	55	19	13	8	6	9	4	i
1/8-28	◎	TH2T02K	2.5P	II	9.728	55	19	13	8	6	9	4	h
1/4-19	◎	TH2T04-	2.5P	II	13.157	62	28	21	11	9	12	4	h
3/8-19	◎	TH2T06-	2.5P	II	16.662	65	28	21	14	11	14	4	h
1/2-14	◎	TH2T08Q	2.5P	II	20.955	80	35	25	18	14	17	4	h
5/8-14	△	TH2T10Q	2.5P	II	22.911	82	35	25	19	15	18	4	h
3/4-14	◎	TH2T12Q	2.5P	II	26.441	85	35	25	23	17	20	4	h
7/8-14	△	TH2T14Q	2.5P	II	30.201	90	40	28	24	19	22	4	h
1'-11	◎	TH2T16U	2.5P	II	33.249	95	45	32	26	21	24	5	h
1'1/8-11	△	TH2T18U	2.5P	II	37.897	100	45	32	28	21	24	5	h
1'1/4-11	◎	TH2T20U	2.5P	II	41.910	105	45	32	32	26	30	5	h
1'1/2-11	◎	TH2T24U	2.5P	II	47.803	110	45	32	38	29	32	6	h
1'3/4-11	△	TH2T28U	2.5P	II	53.746	115	45	35	42	32	35	6	h
2'-11	◎	TH2T32U	2.5P	II	59.614	120	50	35	46	35	38	6	h

규격	재고	상품코드	식부 Chamfer	등급	외경의 기준치수 (mm)	L (mm)	l (mm)	l <sub>g</sub> (mm)	D <sub>s</sub> (mm)	K (mm)	l <sub>k</sub> (mm)	흡수	형상
2'1/4-11	△	TH2T36U	2.5P	II	65.710	145	65	50	50	38	42	6	h
2'1/2-11	△	TH2T40U	2.5P	II	75.184	145	65	50	55	41	44	8	h
3'-11	△	TH2T48U	2.5P	II	87.844	155	65	52	65	50	52	8	h
3'1/2-11	△	TH2T56U	2.5P	II	100.330	165	68	52	70	54	58	8	h
4'-11	△	TH2T64U	2.5P	II	113.030	170	70	55	75	58	62	10	h